

# SMALL COUNCIL. BIG PLANS.

JOIN US TO MAKE YOUR MARK



# YOUR LIFE TO LIVE

We care about our work here, but balance matters. So, you'll be encouraged and supported to knock off on time. And when it's only a two-minute commute home, the afternoons and evenings are truly yours!

We've got your home ready – there's a brand-new 2 or 3-bedroom townhouse which is fully furnished to welcome you home.

Because the commute to work and back is so short, there's plenty of time for your furry friends so we've ensured your house yard is pet friendly.

*Here's to Quilpie.*  
*Here's to You.*

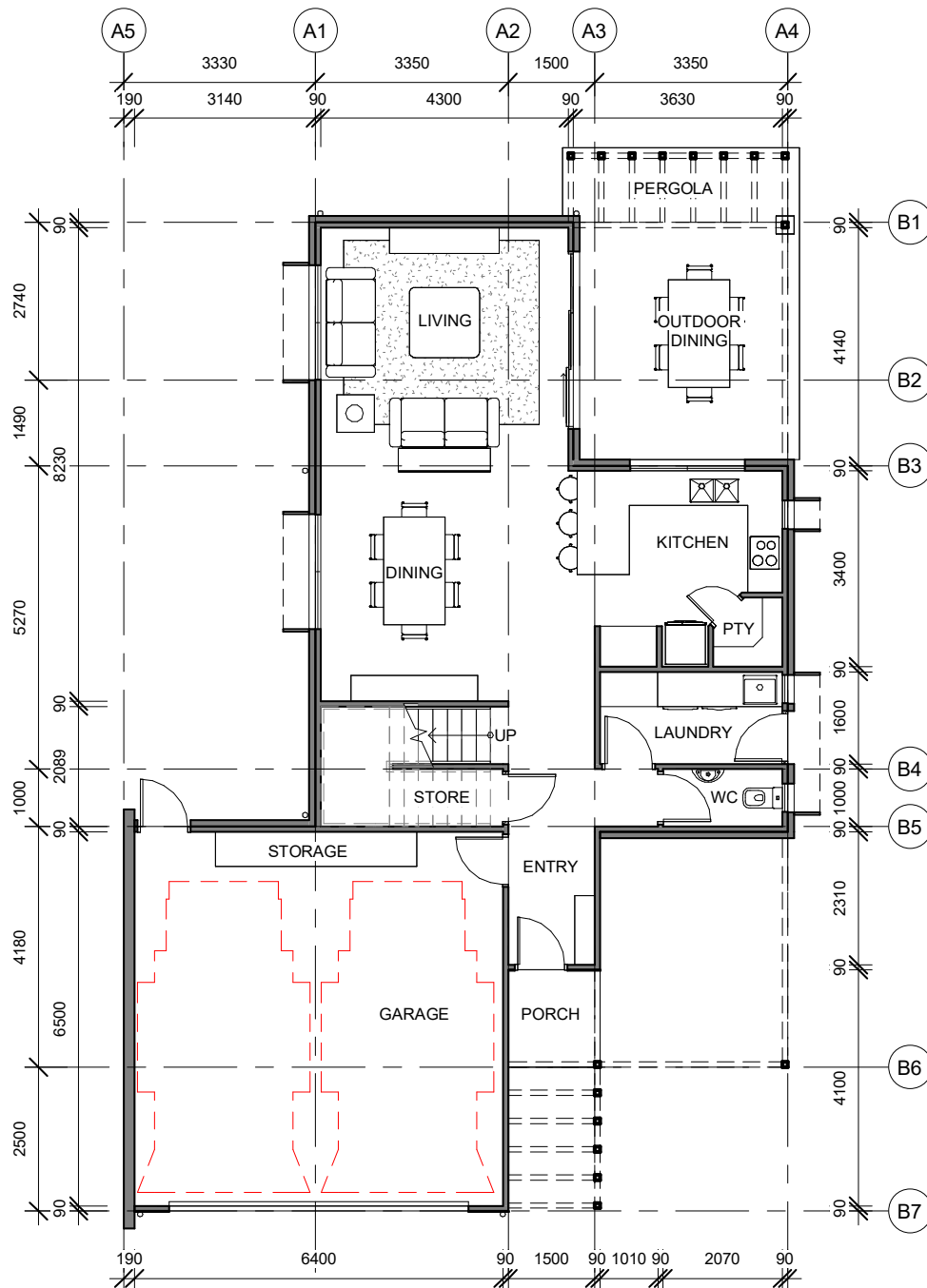
## 2-BEDROOM TOWNHOUSE



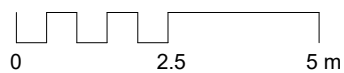
## 3-BEDROOM TOWNHOUSE

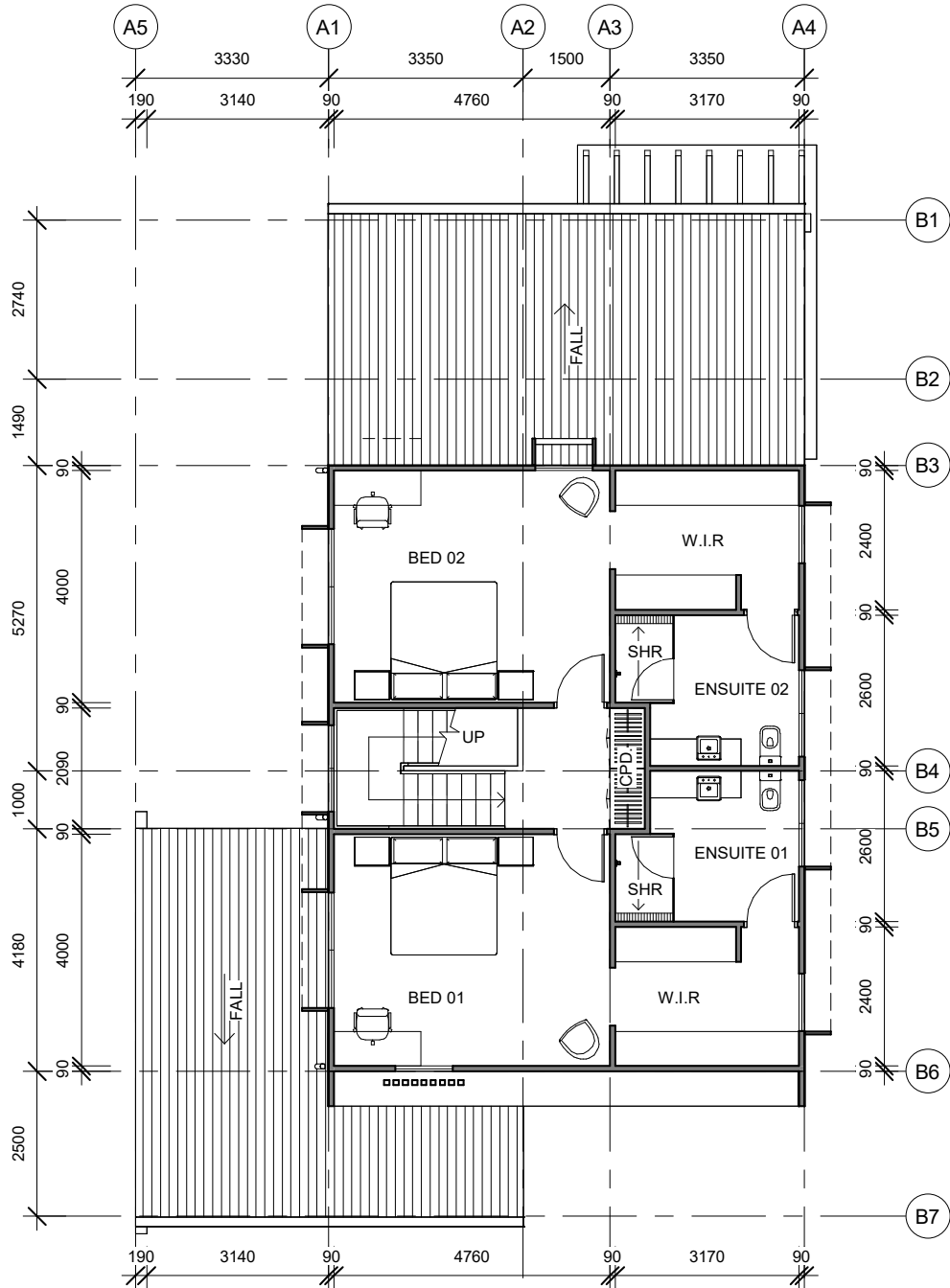


# 2-BEDROOM TOWNHOUSE



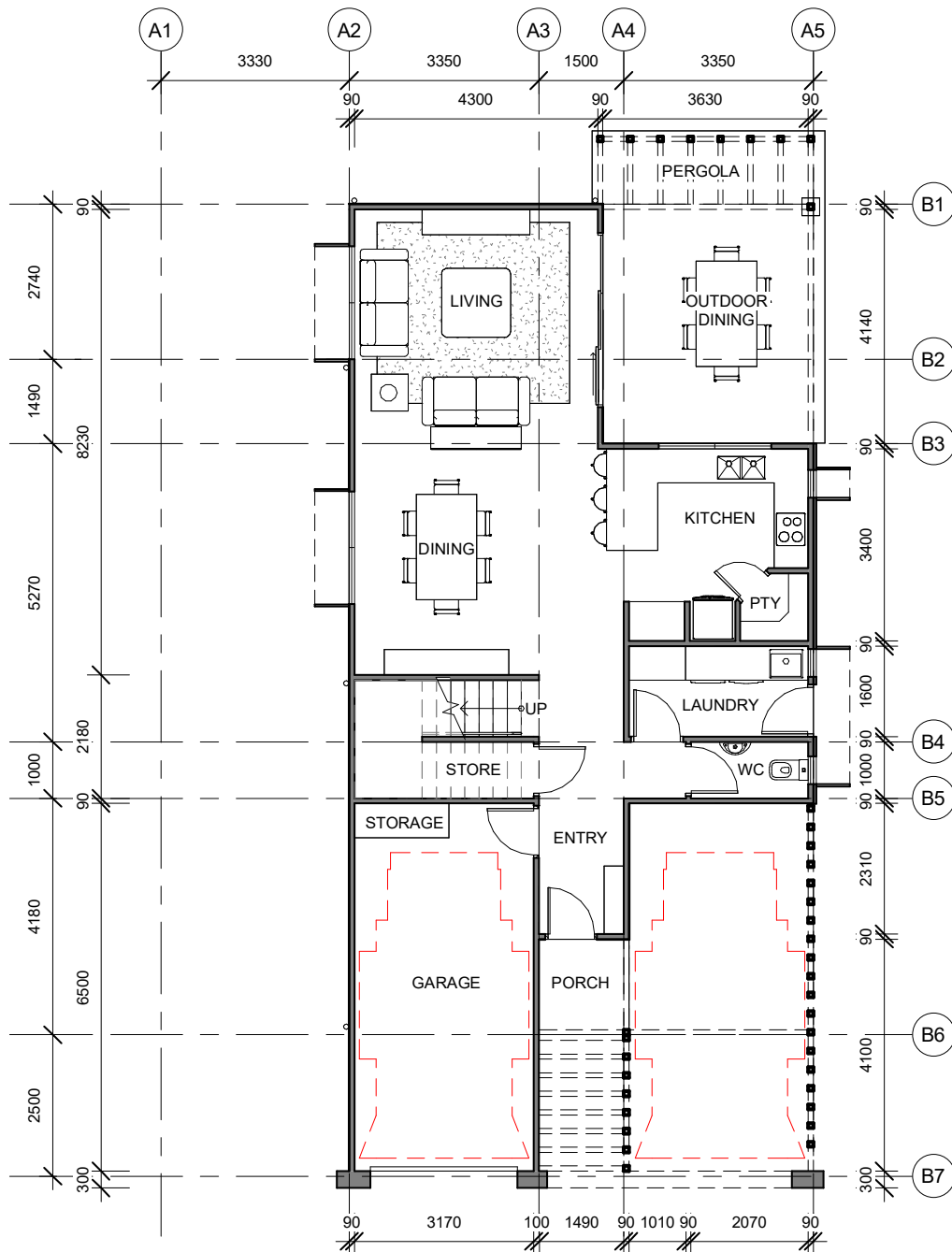
1 GROUND FLOOR HOUSE 02A  
1 : 100





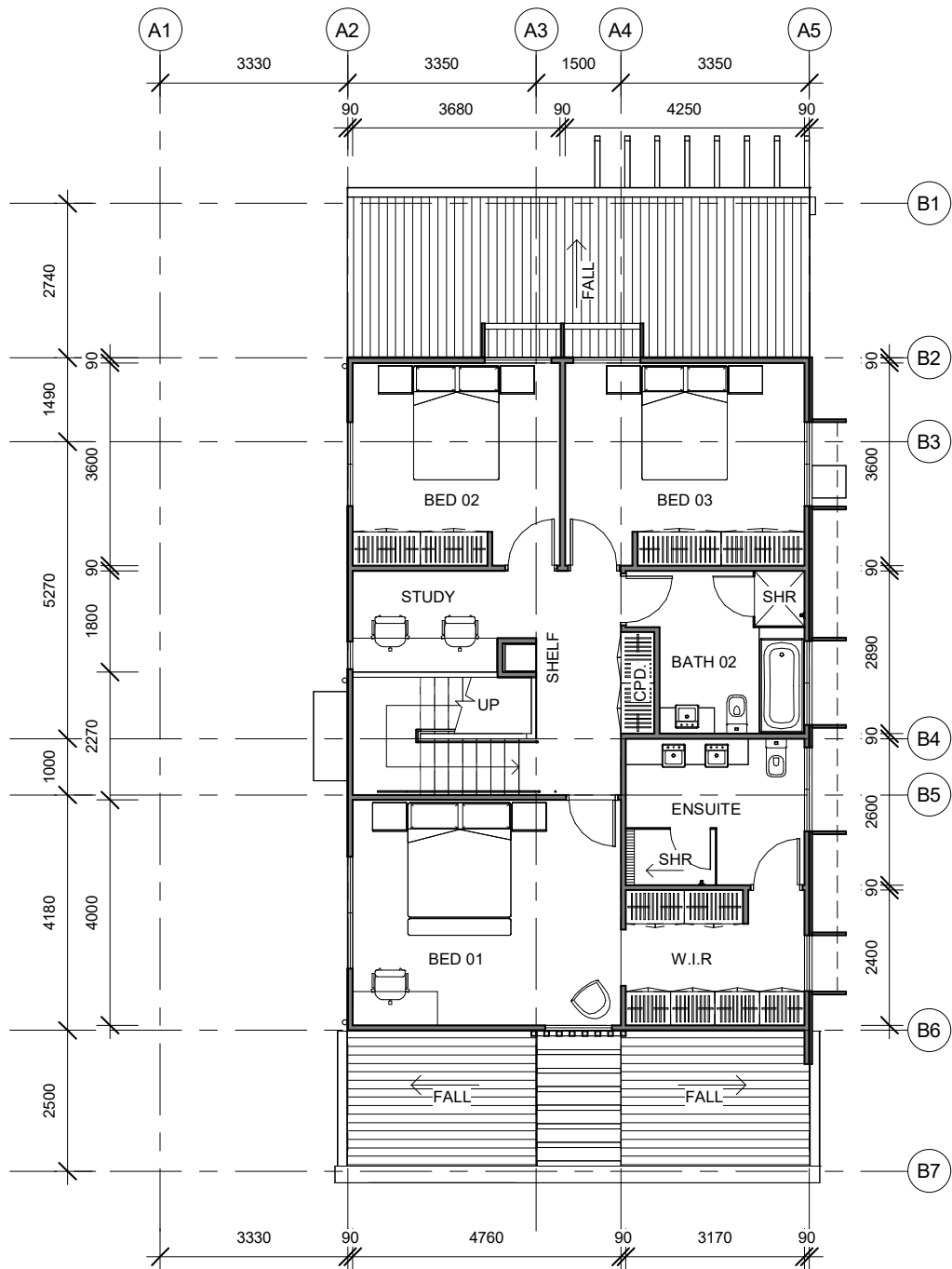
2 FIRST FLOOR HOUSE 02A  
1 : 100

# 3-BEDROOM TOWNHOUSE



1 GROUND FLOOR HOUSE 01A  
1 : 100





2 FIRST FLOOR HOUSE 01A  
1 : 100



**Yep, the mercury can hit 45 degrees in summer but your new home is well equipped with reverse-cycle air-conditioning and ceiling fans. To help balance the budget, we've also installed solar panels.**

Your employment entitlements will also include provision for a utility allowance which will help keep out of pocket utility expenses to a minimum.





**The bedrooms all have queen-sized ensembles with bedside tables, excluding the master bedrooms.**

The master bedrooms boast a king-sized bed with bed head which complements the furniture range of the home.



There's plenty of storage in the walk-in-robos of the master bedrooms for your clothes (and shoes!) for all seasons.



The kitchen is equipped with a dishwasher, fridge and microwave so you'll just need to bring your speciality items such as your favourite coffee machine or pizza oven.



For convenience, all townhouses boast two bathrooms.



The laundry is equipped with a front load washing machine, and a dryer for those rainy days.





The 3-bedroom home has an office space.



There's plenty of storage with shelving in the closed-in garage, and storage under the staircase.





The 2-bedroom home has a double lock-up garage, and the 3-bedroom home has a single lock-up garage and an open carport.

Your employment conditions will include a vehicle allowance, and salary sacrifice vehicle options are available.



**We have some great eating spots, however there's plenty of room to invite guests over for a home-cooked meal.**

When the weather is mild, you'll enjoy being able to open the large sliding doors to let the fresh air in and enjoy the expanse of your indoor and outdoor living spaces.

The gardens and lawns are watered by an automated system which you can control remotely, so you'll have more time to enjoy what the community and our landscape has to offer, not to mention our great facilities like free pool access and a really affordable, modern well-equipped gym.



You can find more information about Quilpie Shire in our Welcome to Quilpie booklet

**Welcome to Quilpie** 

